



## 产品特性 Product features

- 专门为汽车转向器行业开发的轴承。采用高弹性材料ME650和高耐磨材料EPB7制成的滑动片相结合的设计。彻底解决了弹性阻力耐久性和耐磨性无法兼顾的困境
- 高弹性与稳定滑动阻力
- 出色的耐磨性
- 开口设计安装简易
- The bearing specially designed for the automotive steering system. The designation is with the advantages of combining high elastic material ME650 and high wear resistance material EPB7. This perfect design provides the solution of ensuring both elastic resistance duration and wear resistance could be both guaranteed
- High elastic feature and stable sliding resistance
- Outstanding wearing resistance
- Assembly cutout designation for easily installation

## 结构设计 Structure design

CSB-RPM5支撑套采用弹性材料与耐磨材料的结合设计。支撑套圆周120度分布有开口缝使得安装过程变得非常简易；端部三个凸台限制了支撑套使用过程中轴向移动；滑动片上设计了储油穴在初始装配时可涂抹油脂提高滑动片的耐磨性能。

CSB-RPM5 Steering Rack Bearing is made from the combination of elastic material and wear resistance material. The individually designed slot in 120 degrees around the diameter provides easy assembly of the bearings. The 3 pilot blocks near the surface end of the bearing hold the bearing from the axial movement during the operation. The oil deposits in the bearing layer hold the lubricants during the initial assembly for a better lubricating feature and provide good wear resistance of the bearing.

## 材料设计 Material design

主体部分采用了弹性以及抗疲劳性优良的弹性材料ME650，确保了滑动阻力的长久稳定性能；内径支撑滑动片采用了CSB塑料轴承材料中的耐磨专家EPB7，从而确保了支撑套不会因为内径快速磨损而降低了弹性。

The main material of the bearing is the elastic and fatigue resistance polymer ME650 which provide long lasting stable sliding resistance of the bearing. The bearing layer of the ID is made of EPB7 material which prevents the loss of elastic feature due to the quick wear of the bearing ID.

## 安装设计 Assembly design

CSB-RPM5轴承采用直接压装配合，外径留有盈尺寸确保轴承在运动过程中在没有额外限位的情况下也不会从座孔中脱落。推荐使用油脂：CALTEX Multifak EP2 或 ONELUBER MO NO.2。

CSB-RPM5 Bearing is designed for direct press fit installation. The interference of OD ensures the bearing to be tightly seated in the housing without clapping installed.

Recommended grease: CALTEX Multifak EP2 or ONELUBER MO NO.2 .

### RPM5耐久测试 Endurance test for RPM5

产品规格 Specification: RPM5-24

环境 Environment: 20 ~ 25 °C; RH50-70%

齿条轴 Shaft:  $\Phi 24_{-0.005}^0$  mm; Ra0.4

壳体 Housing:  $\Phi 31.49_{+0.005}^0$  mm

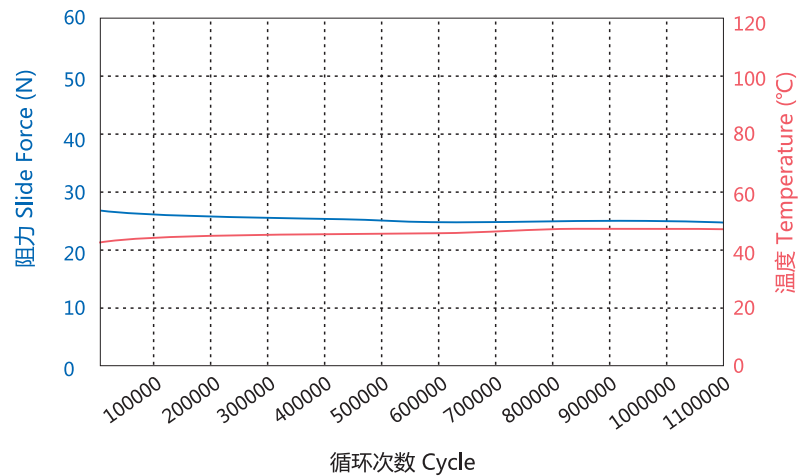
润滑 Lubricant: CALTEX Multifak EP2

载荷 Load: 100N

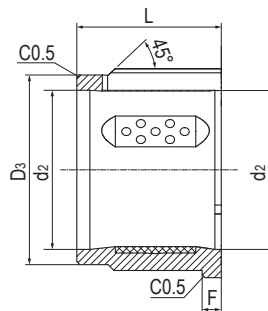
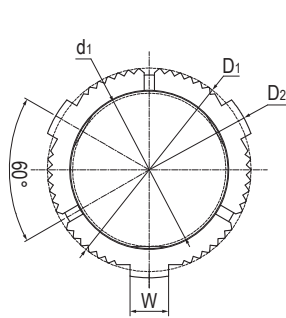
线速度 Speed: 0.3m/s

行程 Stroke: 120mm

循环次数 Cycle: 1080000



### 标准规格 Standard specifications



产品编码 Part No.:

RPM5-22

内径 Inner diameter

型号 Type

产品编码 Part No.	d <sub>1</sub> [mm]	D <sub>1</sub> [mm]	D <sub>2</sub> [mm]	W [mm]	d <sub>2</sub> [mm]	D <sub>3</sub> [mm]	L [mm]	F [mm]	滑动阻力 N Slide Force
RPM5-22	22	29.9	31.6	6	23.55	27.5	22.5	3	10 ~ 30
RPM5-24	24	31.9	33.6	6	25.55	29.5	22.5	3	10 ~ 57
RPM5-25	25	32.9	34.6	6	26.55	30.5	22.5	3	10 ~ 57
RPM5-26	26	33.9	35.6	6	27.55	31.5	22.5	3	10 ~ 57

### 安装尺寸 Installation size

产品编码 Part No.	d [mm]	D <sub>1</sub> [mm]	D [mm]	F <sub>1</sub> [mm]	F <sub>2</sub> [mm]	L [mm]
RPM5-22	22 <sub>-0.052</sub> <sup>0</sup>	33	29.6 <sub>-0.13</sub> <sup>-0.09</sup>	3.7	4	30
RPM5-24	24 <sub>-0.052</sub> <sup>0</sup>	35	31.6 <sub>-0.13</sub> <sup>-0.09</sup>	3.7	4	30
RPM5-25	25 <sub>-0.052</sub> <sup>0</sup>	36	32.6 <sub>-0.13</sub> <sup>-0.09</sup>	3.7	4	30
RPM5-26	26 <sub>-0.052</sub> <sup>0</sup>	37	33.6 <sub>-0.13</sub> <sup>-0.09</sup>	3.7	4	30

