



产品特性 Product features

- 滑动层标准材料TEFPLAS[®]B
可选材料TEFPLAS[®]G、TEFPLAS[®]E
- 外壳材料铝合金，可选不锈钢
- 自润滑，免维护
- 运行平稳，无噪音
- 高速运行，长寿命
- 工作温度 ± 200 °C
- Standard material of sliding layer: TEFPLAS[®]B
Available materials: TEFPLAS[®]G、TEFPLAS[®]E
- Shell made of aluminum, available stainless steel
- Self-lubricating, maintenance-free
- Smooth operation, no noise
- High-speed operation and long life
- Operation temperature ± 200 °C

TEFPLAS[™] 滑动层材料 Sliding layer materials

TEFPLAS[®]B 是标准滑动层材料，综合高承载与耐磨特性，适用于硬度HRC35以上硬轴。

TEFPLAS[®]G 极好的耐磨性能，适用于硬轴、不锈钢轴或铝轴。

TEFPLAS[®]E 符合FDA食品接触安全材料，适用于不锈钢轴或铝轴。

TEFPLAS[®]B is a standard sliding layer material. It combines high load bearing and wear resistance performance, suitable for hard shaft HRC35 or higher.

TEFPLAS[®]G has excellent wear resistance, suitable for hard shaft, stainless steel shaft or aluminum shaft.

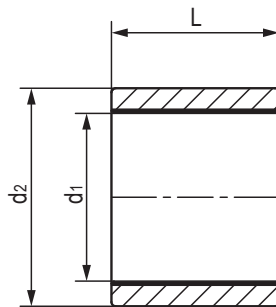
TEFPLAS[®]E FDA food contact safety materials, suitable for stainless steel shaft or aluminum shaft.

| 材料 Material | 摩擦系数 Dry friction coefficient | 最大静载荷 Max. static load MPa | 最大动载荷 Max. dynamic load MPa | 极限PV值 Max. PV N/mm ² x m/s | 最高干运行速度 (m/s) Max. Speed ,Dry running | | 运行温度* Operation temperature °C |
|------------------------|-------------------------------------|----------------------------------|-----------------------------------|---|--|----------------------|---|
| | | | | | 连续运行 Continuous | 间断运行 Intermittent | |
| TEFPLAS [®] B | 0.10-0.25 | 20 | 10 | 0.7 | 1.5 | 4.0 | ± 200 |
| TEFPLAS [®] G | 0.10-0.20 | 16 | 8 | 0.6 | 1.0 | 3.0 | ± 200 |
| TEFPLAS [®] E | 0.05-0.18 | 12 | 6 | 0.4 | 1.0 | 2.0 | ± 200 |

*极端高温下运行需要考虑加大配合间隙消除轴与轴承高温膨胀引起的卡滞现象，请与CSB销售工程师联系

*For operation under extreme high temperature, it is necessary to consider increasing the fitting clearance to avoid stagnation caused by the high temperature expansion of the shaft and bearing. Please contact CSB sales engineers

直套 Metric cylindrical bushings



产品编码 Part No.:

ALBB-0812-08

高度 Length

外径 Outside diameter

内径 Inner diameter

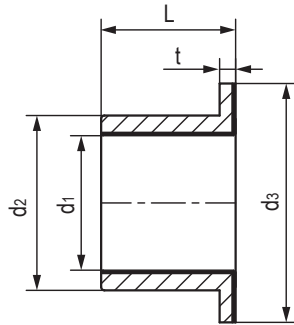
材料 Material: TEFPLAS® B/G/E

座孔 Housing: H7 轴 Shaft: h6-h9

| 产品编码 Part No. | d ₁ [mm] | 公差 Tolerance [mm] | d _{2 (s7)} [mm] | L _(h13) [mm] |
|------------------|------------------------|----------------------|-----------------------------|----------------------------|
| ALBB-0812-08 | 8 | +0.033/+0.066 | 12 | 8 |
| ALBB-0812-10 | 8 | +0.033/+0.066 | 12 | 10 |
| ALBB-0812-12 | 8 | +0.033/+0.066 | 12 | 12 |
| ALBB-0814-08 | 8 | +0.033/+0.066 | 14 | 8 |
| ALBB-0814-10 | 8 | +0.033/+0.066 | 14 | 10 |
| ALBB-1014-08 | 10 | +0.033/+0.066 | 14 | 8 |
| ALBB-1014-10 | 10 | +0.033/+0.066 | 14 | 10 |
| ALBB-1014-12 | 10 | +0.033/+0.066 | 14 | 12 |
| ALBB-1016-08 | 10 | +0.033/+0.066 | 16 | 8 |
| ALBB-1016-10 | 10 | +0.033/+0.066 | 16 | 10 |
| ALBB-1216-10 | 12 | +0.034/+0.070 | 16 | 10 |
| ALBB-1216-15 | 12 | +0.034/+0.070 | 16 | 15 |
| ALBB-1216-20 | 12 | +0.034/+0.070 | 16 | 20 |
| ALBB-1218-08 | 12 | +0.034/+0.070 | 18 | 8 |
| ALBB-1218-10 | 12 | +0.034/+0.070 | 18 | 10 |
| ALBB-1218-12 | 12 | +0.034/+0.070 | 18 | 12 |
| ALBB-1218-15 | 12 | +0.034/+0.070 | 18 | 15 |
| ALBB-1218-20 | 12 | +0.034/+0.070 | 18 | 20 |
| ALBB-1620-12 | 16 | +0.041/+0.080 | 20 | 12 |
| ALBB-1620-15 | 16 | +0.041/+0.080 | 20 | 15 |
| ALBB-1620-20 | 16 | +0.041/+0.080 | 20 | 20 |

| 产品编码 Part No. | d ₁ [mm] | 公差 Tolerance [mm] | d _{2 (s7)} [mm] | L _(h13) [mm] |
|------------------|------------------------|----------------------|-----------------------------|----------------------------|
| ALBB-1620-25 | 16 | +0.041/+0.080 | 20 | 25 |
| ALBB-1622-12 | 16 | +0.041/+0.080 | 22 | 12 |
| ALBB-1622-15 | 16 | +0.041/+0.080 | 22 | 15 |
| ALBB-1622-20 | 16 | +0.041/+0.080 | 22 | 20 |
| ALBB-1622-25 | 16 | +0.041/+0.080 | 22 | 25 |
| ALBB-2025-15 | 20 | +0.042/+0.084 | 25 | 15 |
| ALBB-2025-20 | 20 | +0.042/+0.084 | 25 | 20 |
| ALBB-2025-25 | 20 | +0.042/+0.084 | 25 | 25 |
| ALBB-2026-15 | 20 | +0.042/+0.084 | 26 | 15 |
| ALBB-2026-20 | 20 | +0.042/+0.084 | 26 | 20 |
| ALBB-2026-25 | 20 | +0.042/+0.084 | 26 | 25 |
| ALBB-2026-30 | 20 | +0.042/+0.084 | 26 | 30 |
| ALBB-2530-20 | 25 | +0.050/+0.096 | 30 | 20 |
| ALBB-2530-25 | 25 | +0.050/+0.096 | 30 | 25 |
| ALBB-2530-30 | 25 | +0.050/+0.096 | 30 | 30 |
| ALBB-2532-20 | 25 | +0.050/+0.096 | 32 | 20 |
| ALBB-2532-25 | 25 | +0.050/+0.096 | 32 | 25 |
| ALBB-2532-30 | 25 | +0.050/+0.096 | 32 | 30 |
| ALBB-3038-20 | 30 | +0.050/+0.096 | 38 | 20 |
| ALBB-3038-30 | 30 | +0.050/+0.096 | 38 | 30 |
| ALBB-3038-40 | 30 | +0.050/+0.096 | 38 | 40 |

法兰轴承 Metric flange bushings



产品编码 Part No.:

ALBBF-0812-08

高度 Length

外径 Outside diameter

内径 Inner diameter

法兰设计 Flange design

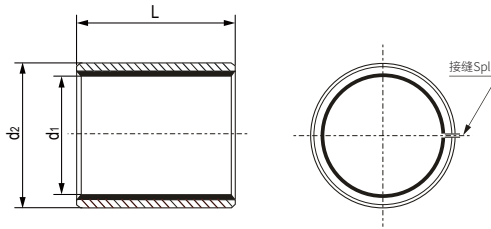
材料 Material: TEFPLAS® B/G/E

座孔 Housing: H7 轴 Shaft: h6-h9

| 产品编码 Part No. | d ₁ [mm] | 公差 Tolerance [mm] | d _{2(s7)} [mm] | d _{3(h13)} [mm] | L _(h13) [mm] | t _(h13) [mm] |
|------------------|------------------------|----------------------|----------------------------|-----------------------------|----------------------------|----------------------------|
| ALBBF-0812-08 | 8 | +0.033/+0.066 | 12 | 16 | 8 | 2 |
| ALBBF-0812-10 | 8 | +0.033/+0.066 | 12 | 16 | 10 | 2 |
| ALBBF-0812-12 | 8 | +0.033/+0.066 | 12 | 16 | 12 | 2 |
| ALBBF-0814-08 | 8 | +0.033/+0.066 | 14 | 18 | 8 | 3 |
| ALBBF-0814-10 | 8 | +0.033/+0.066 | 14 | 18 | 10 | 3 |
| ALBBF-1014-08 | 10 | +0.033/+0.066 | 14 | 19 | 8 | 2 |
| ALBBF-1014-10 | 10 | +0.033/+0.066 | 14 | 19 | 10 | 2 |
| ALBBF-1014-12 | 10 | +0.033/+0.066 | 14 | 19 | 12 | 2 |
| ALBBF-1016-08 | 10 | +0.033/+0.066 | 16 | 22 | 8 | 3 |
| ALBBF-1016-10 | 10 | +0.033/+0.066 | 16 | 22 | 10 | 3 |
| ALBBF-1216-10 | 12 | +0.034/+0.070 | 16 | 22 | 10 | 2 |
| ALBBF-1216-15 | 12 | +0.034/+0.070 | 16 | 22 | 15 | 2 |
| ALBBF-1216-20 | 12 | +0.034/+0.070 | 16 | 22 | 20 | 2 |
| ALBBF-1218-08 | 12 | +0.034/+0.070 | 18 | 24 | 8 | 3 |
| ALBBF-1218-10 | 12 | +0.034/+0.070 | 18 | 22 | 10 | 3 |
| ALBBF-1218-12 | 12 | +0.034/+0.070 | 18 | 24 | 12 | 3 |
| ALBBF-1218-15 | 12 | +0.034/+0.070 | 18 | 22 | 15 | 3 |
| ALBBF-1218-20 | 12 | +0.034/+0.070 | 18 | 22 | 20 | 3 |

| 产品编码 Part No. | d ₁ [mm] | 公差 Tolerance [mm] | d _{2(s7)} [mm] | d _{3(h13)} [mm] | L _(h13) [mm] | t _(h13) [mm] |
|------------------|------------------------|----------------------|----------------------------|-----------------------------|----------------------------|----------------------------|
| ALBBF-1620-12 | 16 | +0.041/+0.080 | 20 | 27 | 12 | 3 |
| ALBBF-1620-15 | 16 | +0.041/+0.080 | 20 | 27 | 15 | 3 |
| ALBBF-1620-20 | 16 | +0.041/+0.080 | 20 | 27 | 20 | 3 |
| ALBBF-1620-25 | 16 | +0.041/+0.080 | 20 | 27 | 25 | 3 |
| ALBBF-1622-12 | 16 | +0.041/+0.080 | 22 | 28 | 12 | 3 |
| ALBBF-1622-15 | 16 | +0.041/+0.080 | 22 | 28 | 15 | 3 |
| ALBBF-1622-20 | 16 | +0.041/+0.080 | 22 | 28 | 20 | 3 |
| ALBBF-1622-25 | 16 | +0.041/+0.080 | 22 | 28 | 25 | 3 |
| ALBBF-2026-15 | 20 | +0.042/+0.084 | 26 | 32 | 15 | 3 |
| ALBBF-2026-20 | 20 | +0.042/+0.084 | 26 | 32 | 20 | 3 |
| ALBBF-2026-25 | 20 | +0.042/+0.084 | 26 | 32 | 25 | 3 |
| ALBBF-2026-30 | 20 | +0.042/+0.084 | 26 | 32 | 30 | 3 |
| ALBBF-2532-20 | 25 | +0.050/+0.096 | 32 | 38 | 20 | 3 |
| ALBBF-2532-25 | 25 | +0.050/+0.096 | 32 | 38 | 25 | 3 |
| ALBBF-2532-30 | 25 | +0.050/+0.096 | 32 | 38 | 30 | 3 |
| ALBBF-3038-20 | 30 | +0.050/+0.096 | 38 | 44 | 20 | 3 |
| ALBBF-3038-30 | 30 | +0.050/+0.096 | 38 | 44 | 30 | 3 |
| ALBBF-3038-40 | 30 | +0.050/+0.096 | 38 | 44 | 40 | 3 |

直套 [接缝] Metric cylindrical bushings(Split)



产品编码 Part No.:

ALB-0812-08

高度 Length

外径 Outside diameter

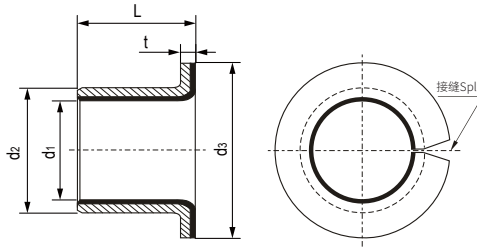
内径 Inner diameter

材料 Material: TEFPLAS® B/G

座孔 Housing: H7 轴 Shaft: h6-h9

| 产品编码 Part No. | d ₁ [mm] | 公差 Tolerance [mm] | d _{2 (S7)} [mm] | L _(H13) [mm] | 产品编码 Part No. | d ₁ [mm] | 公差 Tolerance [mm] | d _{2 (S7)} [mm] | L _(H13) [mm] | 产品编码 Part No. | d ₁ [mm] | 公差 Tolerance [mm] | d _{2 (S7)} [mm] | L _(H13) [mm] |
|------------------|------------------------|----------------------|-----------------------------|----------------------------|------------------|------------------------|----------------------|-----------------------------|----------------------------|------------------|------------------------|----------------------|-----------------------------|----------------------------|
| ALB-0507-05 | 5 | -0.01/+0.055 | 7 | 5 | ALB-1517-25 | 15 | -0.01/+0.058 | 17 | 25 | ALB-2528-25 | 25 | -0.01/+0.071 | 28 | 25 |
| ALB-0507-08 | 5 | -0.01/+0.055 | 7 | 8 | ALB-1618-10 | 16 | -0.01/+0.058 | 18 | 10 | ALB-2528-30 | 25 | -0.01/+0.071 | 28 | 30 |
| ALB-0507-10 | 5 | -0.01/+0.055 | 7 | 10 | ALB-1618-12 | 16 | -0.01/+0.058 | 18 | 12 | ALB-2832-15 | 28 | -0.01/+0.085 | 32 | 15 |
| ALB-0608-05 | 6 | -0.01/+0.055 | 8 | 5 | ALB-1618-15 | 16 | -0.01/+0.058 | 18 | 15 | ALB-2832-20 | 28 | -0.01/+0.085 | 32 | 20 |
| ALB-0608-08 | 6 | -0.01/+0.055 | 8 | 8 | ALB-1618-20 | 16 | -0.01/+0.058 | 18 | 20 | ALB-2832-25 | 28 | -0.01/+0.085 | 32 | 25 |
| ALB-0608-10 | 6 | -0.01/+0.055 | 8 | 10 | ALB-1618-25 | 16 | -0.01/+0.058 | 18 | 25 | ALB-2832-30 | 28 | -0.01/+0.085 | 32 | 30 |
| ALB-0810-08 | 8 | -0.01/+0.055 | 10 | 8 | ALB-1618-30 | 16 | -0.01/+0.058 | 18 | 30 | ALB-2832-40 | 28 | -0.01/+0.085 | 32 | 40 |
| ALB-0810-10 | 8 | -0.01/+0.055 | 10 | 10 | ALB-1719-10 | 17 | -0.01/+0.061 | 19 | 10 | ALB-3034-20 | 30 | -0.01/+0.085 | 34 | 20 |
| ALB-0810-12 | 8 | -0.01/+0.055 | 10 | 12 | ALB-1719-12 | 17 | -0.01/+0.061 | 19 | 12 | ALB-3034-25 | 30 | -0.01/+0.085 | 34 | 25 |
| ALB-0810-15 | 8 | -0.01/+0.055 | 10 | 15 | ALB-1719-15 | 17 | -0.01/+0.061 | 19 | 15 | ALB-3034-30 | 30 | -0.01/+0.085 | 34 | 30 |
| ALB-1012-08 | 10 | -0.01/+0.058 | 12 | 8 | ALB-1719-20 | 17 | -0.01/+0.061 | 19 | 20 | ALB-3034-40 | 30 | -0.01/+0.085 | 34 | 40 |
| ALB-1012-10 | 10 | -0.01/+0.058 | 12 | 10 | ALB-1719-25 | 17 | -0.01/+0.061 | 19 | 25 | ALB-3236-20 | 32 | -0.01/+0.085 | 36 | 20 |
| ALB-1012-12 | 10 | -0.01/+0.058 | 12 | 12 | ALB-1719-30 | 17 | -0.01/+0.061 | 19 | 30 | ALB-3236-25 | 32 | -0.01/+0.085 | 36 | 25 |
| ALB-1012-15 | 10 | -0.01/+0.058 | 12 | 15 | ALB-1820-10 | 18 | -0.01/+0.061 | 20 | 10 | ALB-3236-30 | 32 | -0.01/+0.085 | 36 | 30 |
| ALB-1012-20 | 10 | -0.01/+0.058 | 12 | 20 | ALB-1820-12 | 18 | -0.01/+0.061 | 20 | 12 | ALB-3236-40 | 32 | -0.01/+0.085 | 36 | 40 |
| ALB-1214-08 | 12 | -0.01/+0.058 | 14 | 8 | ALB-1820-15 | 18 | -0.01/+0.061 | 20 | 15 | ALB-3539-12 | 35 | -0.01/+0.085 | 39 | 12 |
| ALB-1214-10 | 12 | -0.01/+0.058 | 14 | 10 | ALB-1820-20 | 18 | -0.01/+0.061 | 20 | 20 | ALB-3539-15 | 35 | -0.01/+0.085 | 39 | 15 |
| ALB-1214-12 | 12 | -0.01/+0.058 | 14 | 12 | ALB-1820-25 | 18 | -0.01/+0.061 | 20 | 25 | ALB-3539-20 | 35 | -0.01/+0.085 | 39 | 20 |
| ALB-1214-15 | 12 | -0.01/+0.058 | 14 | 15 | ALB-1820-30 | 18 | -0.01/+0.061 | 20 | 30 | ALB-3539-25 | 35 | -0.01/+0.085 | 39 | 25 |
| ALB-1214-20 | 12 | -0.01/+0.058 | 14 | 20 | ALB-2023-10 | 20 | -0.01/+0.062 | 23 | 10 | ALB-3539-30 | 35 | -0.01/+0.085 | 39 | 30 |
| ALB-1214-25 | 12 | -0.01/+0.058 | 14 | 25 | ALB-2023-12 | 20 | -0.01/+0.062 | 23 | 12 | ALB-3539-40 | 35 | -0.01/+0.085 | 39 | 40 |
| ALB-1315-10 | 13 | -0.01/+0.058 | 15 | 10 | ALB-2023-15 | 20 | -0.01/+0.062 | 23 | 15 | ALB-3539-50 | 35 | -0.01/+0.085 | 39 | 50 |
| ALB-1315-12 | 13 | -0.01/+0.058 | 15 | 12 | ALB-2023-20 | 20 | -0.01/+0.062 | 23 | 20 | ALB-3842-15 | 38 | -0.01/+0.085 | 42 | 15 |
| ALB-1315-15 | 13 | -0.01/+0.058 | 15 | 15 | ALB-2023-25 | 20 | -0.01/+0.062 | 23 | 25 | ALB-3842-20 | 38 | -0.01/+0.085 | 42 | 20 |
| ALB-1315-20 | 13 | -0.01/+0.058 | 15 | 20 | ALB-2023-30 | 20 | -0.01/+0.062 | 23 | 30 | ALB-3842-25 | 38 | -0.01/+0.085 | 42 | 25 |
| ALB-1315-25 | 13 | -0.01/+0.058 | 15 | 25 | ALB-2225-10 | 22 | -0.01/+0.071 | 25 | 10 | ALB-3842-30 | 38 | -0.01/+0.085 | 42 | 30 |
| ALB-1416-10 | 14 | -0.01/+0.058 | 16 | 10 | ALB-2225-12 | 22 | -0.01/+0.071 | 25 | 12 | ALB-3842-40 | 38 | -0.01/+0.085 | 42 | 40 |
| ALB-1416-12 | 14 | -0.01/+0.058 | 16 | 12 | ALB-2225-15 | 22 | -0.01/+0.071 | 25 | 15 | ALB-3842-50 | 38 | -0.01/+0.085 | 42 | 50 |
| ALB-1416-15 | 14 | -0.01/+0.058 | 16 | 15 | ALB-2225-20 | 22 | -0.01/+0.071 | 25 | 20 | ALB-4044-20 | 40 | -0.01/+0.085 | 44 | 20 |
| ALB-1416-20 | 14 | -0.01/+0.058 | 16 | 20 | ALB-2225-25 | 22 | -0.01/+0.071 | 25 | 25 | ALB-4044-25 | 40 | -0.01/+0.085 | 44 | 25 |
| ALB-1416-25 | 14 | -0.01/+0.058 | 16 | 25 | ALB-2225-30 | 22 | -0.01/+0.071 | 25 | 30 | ALB-4044-30 | 40 | -0.01/+0.085 | 44 | 30 |
| ALB-1517-10 | 15 | -0.01/+0.058 | 17 | 10 | ALB-2528-10 | 25 | -0.01/+0.071 | 28 | 10 | ALB-4044-40 | 40 | -0.01/+0.085 | 44 | 40 |
| ALB-1517-12 | 15 | -0.01/+0.058 | 17 | 12 | ALB-2528-12 | 25 | -0.01/+0.071 | 28 | 12 | ALB-4044-50 | 40 | -0.01/+0.085 | 44 | 50 |
| ALB-1517-15 | 15 | -0.01/+0.058 | 17 | 15 | ALB-2528-15 | 25 | -0.01/+0.071 | 28 | 15 | | | | | |
| ALB-1517-20 | 15 | -0.01/+0.058 | 17 | 20 | ALB-2528-20 | 25 | -0.01/+0.071 | 28 | 20 | | | | | |

法兰轴承 [接缝] Metric flange bushings(Split)



产品编码 Part No.:

ALBF-0812-08

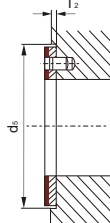
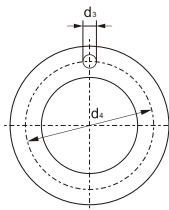
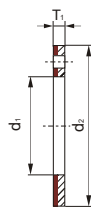
- 高度 Length
- 外径 Outside diameter
- 内径 Inner diameter
- 法兰设计 Flange design
- 材料 Material: TEFLAS® B/G

座孔 Housing: H7 轴 Shaft: h6-h9

| 产品编码 Part No. | d ₁ [mm] | 公差 Tolerance [mm] | d _{2(s7)} [mm] | d _{3(h13)} [mm] | L _(h13) [mm] | t _(h13) [mm] |
|------------------|------------------------|----------------------|----------------------------|-----------------------------|----------------------------|----------------------------|
| ALBF-0507-05 | 5 | -0.01/+0.055 | 7 | 11 | 5 | 1 |
| ALBF-0507-10 | 5 | -0.01/+0.055 | 7 | 11 | 10 | 1 |
| ALBF-0608-04 | 6 | -0.01/+0.055 | 8 | 12 | 4 | 1 |
| ALBF-0608-05 | 6 | -0.01/+0.055 | 8 | 12 | 5 | 1 |
| ALBF-0608-06 | 6 | -0.01/+0.055 | 8 | 12 | 6 | 1 |
| ALBF-0608-07 | 6 | -0.01/+0.055 | 8 | 12 | 7 | 1 |
| ALBF-0608-08 | 6 | -0.01/+0.055 | 8 | 12 | 8 | 1 |
| ALBF-0608-10 | 6 | -0.01/+0.055 | 8 | 12 | 10 | 1 |
| ALBF-0810-055 | 8 | -0.01/+0.055 | 10 | 15 | 5.5 | 1 |
| ALBF-0810-075 | 8 | -0.01/+0.055 | 10 | 15 | 7.5 | 1 |
| ALBF-0810-095 | 8 | -0.01/+0.055 | 10 | 15 | 9.5 | 1 |
| ALBF-0810-10 | 8 | -0.01/+0.055 | 10 | 15 | 10 | 1 |
| ALBF-0810-15 | 8 | -0.01/+0.055 | 10 | 15 | 15 | 1 |
| ALBF-1012-05 | 10 | -0.01/+0.058 | 12 | 18 | 5 | 1 |
| ALBF-1012-06 | 10 | -0.01/+0.058 | 12 | 18 | 6 | 1 |
| ALBF-1012-07 | 10 | -0.01/+0.058 | 12 | 18 | 7 | 1 |
| ALBF-1012-09 | 10 | -0.01/+0.058 | 12 | 18 | 9 | 1 |
| ALBF-1012-10 | 10 | -0.01/+0.058 | 12 | 18 | 10 | 1 |
| ALBF-1012-12 | 10 | -0.01/+0.058 | 12 | 18 | 12 | 1 |
| ALBF-1012-15 | 10 | -0.01/+0.058 | 12 | 18 | 15 | 1 |
| ALBF-1214-06 | 12 | -0.01/+0.058 | 14 | 20 | 6 | 1 |
| ALBF-1214-07 | 12 | -0.01/+0.058 | 14 | 20 | 7 | 1 |
| ALBF-1214-09 | 12 | -0.01/+0.058 | 14 | 20 | 9 | 1 |
| ALBF-1214-10 | 12 | -0.01/+0.058 | 14 | 20 | 10 | 1 |
| ALBF-1214-12 | 12 | -0.01/+0.058 | 14 | 20 | 12 | 1 |
| ALBF-1214-15 | 12 | -0.01/+0.058 | 14 | 20 | 15 | 1 |
| ALBF-1214-17 | 12 | -0.01/+0.058 | 14 | 20 | 17 | 1 |
| ALBF-1214-20 | 12 | -0.01/+0.058 | 14 | 20 | 20 | 1 |
| ALBF-1416-04 | 14 | -0.01/+0.058 | 16 | 22 | 4 | 1 |
| ALBF-1416-06 | 14 | -0.01/+0.058 | 16 | 22 | 6 | 1 |
| ALBF-1416-08 | 14 | -0.01/+0.058 | 16 | 22 | 8 | 1 |
| ALBF-1416-10 | 14 | -0.01/+0.058 | 16 | 22 | 10 | 1 |
| ALBF-1416-12 | 14 | -0.01/+0.058 | 16 | 22 | 12 | 1 |
| ALBF-1416-15 | 14 | -0.01/+0.058 | 16 | 22 | 15 | 1 |

| 产品编码 Part No. | d ₁ [mm] | 公差 Tolerance [mm] | d _{2(s7)} [mm] | d _{3(h13)} [mm] | L _(h13) [mm] | t _(h13) [mm] |
|------------------|------------------------|----------------------|----------------------------|-----------------------------|----------------------------|----------------------------|
| ALBF-1416-17 | 14 | -0.01/+0.058 | 16 | 22 | 17 | 1 |
| ALBF-1517-09 | 15 | -0.01/+0.058 | 17 | 23 | 9 | 1 |
| ALBF-1517-12 | 15 | -0.01/+0.058 | 17 | 23 | 12 | 1 |
| ALBF-1517-17 | 15 | -0.01/+0.058 | 17 | 23 | 17 | 1 |
| ALBF-1517-20 | 15 | -0.01/+0.058 | 17 | 23 | 20 | 1 |
| ALBF-1618-06 | 16 | -0.01/+0.058 | 18 | 24 | 6 | 1 |
| ALBF-1618-09 | 16 | -0.01/+0.058 | 18 | 24 | 9 | 1 |
| ALBF-1618-12 | 16 | -0.01/+0.058 | 18 | 24 | 12 | 1 |
| ALBF-1618-17 | 16 | -0.01/+0.058 | 18 | 24 | 17 | 1 |
| ALBF-1618-21 | 16 | -0.01/+0.058 | 18 | 24 | 21 | 1 |
| ALBF-1820-04 | 18 | -0.01/+0.061 | 20 | 26 | 4 | 1 |
| ALBF-1820-06 | 18 | -0.01/+0.061 | 20 | 26 | 6 | 1 |
| ALBF-1820-09 | 18 | -0.01/+0.061 | 20 | 26 | 9 | 1 |
| ALBF-1820-12 | 18 | -0.01/+0.061 | 20 | 26 | 12 | 1 |
| ALBF-1820-17 | 18 | -0.01/+0.061 | 20 | 26 | 17 | 1 |
| ALBF-1820-30 | 18 | -0.01/+0.061 | 20 | 26 | 30 | 1 |
| ALBF-2023-11.5 | 20 | -0.01/+0.062 | 23 | 30 | 11.5 | 1.5 |
| ALBF-2023-16.5 | 20 | -0.01/+0.062 | 23 | 30 | 16.5 | 1.5 |
| ALBF-2023-21.5 | 20 | -0.01/+0.062 | 23 | 30 | 21.5 | 1.5 |
| ALBF-2528-11.5 | 25 | -0.01/+0.071 | 28 | 35 | 11.5 | 1.5 |
| ALBF-2528-16.5 | 25 | -0.01/+0.071 | 28 | 35 | 16.5 | 1.5 |
| ALBF-2528-21.5 | 25 | -0.01/+0.071 | 28 | 35 | 21.5 | 1.5 |
| ALBF-3034-16 | 30 | -0.01/+0.085 | 34 | 42 | 16 | 2 |
| ALBF-3034-20 | 30 | -0.01/+0.085 | 34 | 42 | 20 | 2 |
| ALBF-3034-26 | 30 | -0.01/+0.085 | 34 | 42 | 26 | 2 |
| ALBF-3034-37 | 30 | -0.01/+0.085 | 34 | 42 | 37 | 2 |
| ALBF-3539-12 | 35 | -0.01/+0.085 | 39 | 47 | 12 | 2 |
| ALBF-3539-16 | 35 | -0.01/+0.085 | 39 | 47 | 16 | 2 |
| ALBF-3539-26 | 35 | -0.01/+0.085 | 39 | 47 | 26 | 2 |
| ALBF-3539-36 | 35 | -0.01/+0.085 | 39 | 47 | 36 | 2 |
| ALBF-4044-20 | 40 | -0.01/+0.085 | 44 | 52 | 20 | 2 |
| ALBF-4044-30 | 40 | -0.01/+0.085 | 44 | 52 | 30 | 2 |
| ALBF-4044-40 | 40 | -0.01/+0.085 | 44 | 52 | 40 | 2 |
| ALBF-4044-50 | 40 | -0.01/+0.085 | 44 | 52 | 50 | 2 |

止推垫片 Thrust Washers



产品编码 Part No.:

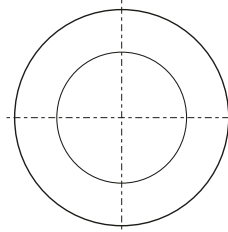
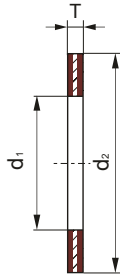
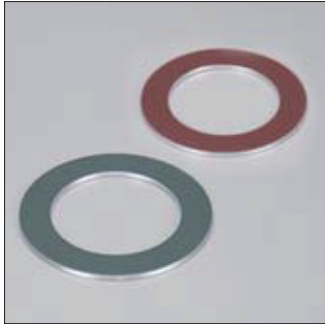
ALBSW-1020-015

- 厚度 Thickness
- 外径 Outside diameter
- 内径 Inner diameter
- 止推垫片 Thrust Washers
- 单面耐磨层
Sliding layer on one side
- 材料 Material: TEFPLAS® B/G

| 产品编码 Part No. | $d_1^{+0.25}$ [mm] | $d_2^{-0.25}$ [mm] | $T_1^{-0.05}$ [mm] | $d_3^{+0.1}$ $+0.4$ [mm] | $d_4 \pm 0.125$ [mm] | $d_5^{+0.12}$ [mm] | $T_2 \pm 0.2$ [mm] |
|------------------|-----------------------|-----------------------|-----------------------|--------------------------------|-------------------------|-----------------------|-----------------------|
| ALBSW-0818-015 | 8 | 18 | 1.5 | 1 | 13 | 18 | 1 |
| ALBSW-1020-015 | 10 | 20 | 1.5 | 1.5 | 15 | 20 | 1 |
| ALBSW-1224-015 | 12 | 24 | 1.5 | 1.5 | 18 | 24 | 1 |
| ALBSW-1426-015 | 14 | 26 | 1.5 | 2 | 20 | 26 | 1 |
| ALBSW-1630-015 | 16 | 30 | 1.5 | 2 | 23 | 30 | 1 |
| ALBSW-1832-015 | 18 | 32 | 1.5 | 2 | 25 | 32 | 1 |
| ALBSW-2036-015 | 20 | 36 | 1.5 | 3 | 28 | 36 | 1 |
| ALBSW-2238-015 | 22 | 38 | 1.5 | 3 | 30 | 38 | 1 |
| ALBSW-2442-015 | 24 | 42 | 1.5 | 3 | 33 | 42 | 1 |
| ALBSW-2644-015 | 26 | 44 | 1.5 | 3 | 35 | 44 | 1 |
| ALBSW-2848-015 | 28 | 48 | 1.5 | 4 | 38 | 48 | 1 |
| ALBSW-3254-015 | 32 | 54 | 1.5 | 4 | 43 | 54 | 1 |
| ALBSW-3862-015 | 38 | 62 | 1.5 | 4 | 50 | 62 | 1 |
| ALBSW-4266-015 | 42 | 66 | 1.5 | 4 | 54 | 66 | 1 |
| ALBSW-4874-020 | 48 | 74 | 2 | 4 | 61 | 74 | 1.5 |
| ALBSW-5278-020 | 52 | 78 | 2 | 4 | 65 | 78 | 1.5 |
| ALBSW-6290-020 | 62 | 90 | 2 | 4 | 76 | 90 | 1.5 |

| 产品编码 Part No. | $d_1^{+0.25}$ [mm] | $d_2^{-0.25}$ [mm] | $T_1^{-0.05}$ [mm] | $d_3^{+0.1}$ $+0.4$ [mm] | $d_4 \pm 0.125$ [mm] | $d_5^{+0.12}$ [mm] | $T_2 \pm 0.2$ [mm] |
|------------------|-----------------------|-----------------------|-----------------------|--------------------------------|-------------------------|-----------------------|-----------------------|
| ALGSW-0818-015 | 8 | 18 | 1.5 | 1 | 13 | 18 | 1 |
| ALGSW-1020-015 | 10 | 20 | 1.5 | 1.5 | 15 | 20 | 1 |
| ALGSW-1224-015 | 12 | 24 | 1.5 | 1.5 | 18 | 24 | 1 |
| ALGSW-1426-015 | 14 | 26 | 1.5 | 2 | 20 | 26 | 1 |
| ALGSW-1630-015 | 16 | 30 | 1.5 | 2 | 23 | 30 | 1 |
| ALGSW-1832-015 | 18 | 32 | 1.5 | 2 | 25 | 32 | 1 |
| ALGSW-2036-015 | 20 | 36 | 1.5 | 3 | 28 | 36 | 1 |
| ALGSW-2238-015 | 22 | 38 | 1.5 | 3 | 30 | 38 | 1 |
| ALGSW-2442-015 | 24 | 42 | 1.5 | 3 | 33 | 42 | 1 |
| ALGSW-2644-015 | 26 | 44 | 1.5 | 3 | 35 | 44 | 1 |
| ALGSW-2848-015 | 28 | 48 | 1.5 | 4 | 38 | 48 | 1 |
| ALGSW-3254-015 | 32 | 54 | 1.5 | 4 | 43 | 54 | 1 |
| ALGSW-3862-015 | 38 | 62 | 1.5 | 4 | 50 | 62 | 1 |
| ALGSW-4266-015 | 42 | 66 | 1.5 | 4 | 54 | 66 | 1 |
| ALGSW-4874-020 | 48 | 74 | 2 | 4 | 61 | 74 | 1.5 |
| ALGSW-5278-020 | 52 | 78 | 2 | 4 | 65 | 78 | 1.5 |
| ALGSW-6290-020 | 62 | 90 | 2 | 4 | 76 | 90 | 1.5 |

止推垫片 Thrust Washers



产品编码 Part No.:

ALBBW-1020-015

厚度 Thickness

外径 Outside diameter

内径 Inner diameter

止推垫片 Thrust Washers

双面耐磨层
Sliding layer on both sides

材料 Material: TEFLAS[®] B/G

| 产品编码 Part No. | $d_1^{+0.25}$ [mm] | $d_2^{-0.25}$ [mm] | $T_{-0.05}$ [mm] |
|------------------|-----------------------|-----------------------|---------------------|
| ALBBW-0818-015 | 8 | 18 | 1.5 |
| ALBBW-1020-015 | 10 | 20 | 1.5 |
| ALBBW-1224-015 | 12 | 24 | 1.5 |
| ALBBW-1426-015 | 14 | 26 | 1.5 |
| ALBBW-1630-015 | 16 | 30 | 1.5 |
| ALBBW-1832-015 | 18 | 32 | 1.5 |
| ALBBW-2036-015 | 20 | 36 | 1.5 |
| ALBBW-2238-015 | 22 | 38 | 1.5 |
| ALBBW-2442-015 | 24 | 42 | 1.5 |
| ALBBW-2644-015 | 26 | 44 | 1.5 |
| ALBBW-2848-015 | 28 | 48 | 1.5 |
| ALBBW-3254-015 | 32 | 54 | 1.5 |
| ALBBW-3862-015 | 38 | 62 | 1.5 |
| ALBBW-4266-015 | 42 | 66 | 1.5 |
| ALBBW-4874-020 | 48 | 74 | 2 |
| ALBBW-5278-020 | 52 | 78 | 2 |
| ALBBW-6290-020 | 62 | 90 | 2 |

| 产品编码 Part No. | $d_1^{+0.25}$ [mm] | $d_2^{-0.25}$ [mm] | $T_{-0.05}$ [mm] |
|------------------|-----------------------|-----------------------|---------------------|
| ALGBW-0818-015 | 8 | 18 | 1.5 |
| ALGBW-1020-015 | 10 | 20 | 1.5 |
| ALGBW-1224-015 | 12 | 24 | 1.5 |
| ALGBW-1426-015 | 14 | 26 | 1.5 |
| ALGBW-1630-015 | 16 | 30 | 1.5 |
| ALGBW-1832-015 | 18 | 32 | 1.5 |
| ALGBW-2036-015 | 20 | 36 | 1.5 |
| ALGBW-2238-015 | 22 | 38 | 1.5 |
| ALGBW-2442-015 | 24 | 42 | 1.5 |
| ALGBW-2644-015 | 26 | 44 | 1.5 |
| ALGBW-2848-015 | 28 | 48 | 1.5 |
| ALGBW-3254-015 | 32 | 54 | 1.5 |
| ALGBW-3862-015 | 38 | 62 | 1.5 |
| ALGBW-4266-015 | 42 | 66 | 1.5 |
| ALGBW-4874-020 | 48 | 74 | 2 |
| ALGBW-5278-020 | 52 | 78 | 2 |
| ALGBW-6290-020 | 62 | 90 | 2 |