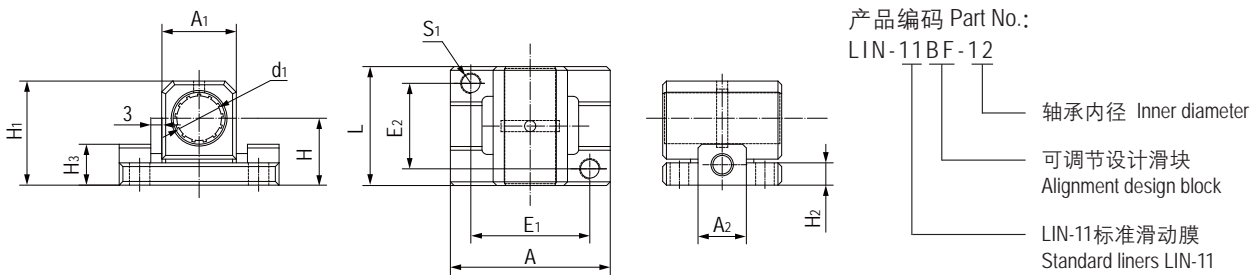


### LIN-11BF 封闭式浮动直线滑块轴承 Closed and floating pillow blocks



- 封闭式浮动设计
  - 装配标准LIN-11滑动膜
  - 补偿平行度误差  $\pm 3.0\text{mm}$
  - 补偿对中误差  $\pm 3.5^\circ$
  - 阳极氧化铝合金适配器
  - 免维护、低噪音
  - 适用于污垢或灰尘环境
  - 使用温度  $-50^\circ\text{C}/+90^\circ\text{C}$
- Closed and floating design
  - Assembled standard liner LIN-11
  - Compensation of parallelism errors  $\pm 3.0\text{mm}$
  - Compensation of misalignment errors  $\pm 3.5^\circ$
  - Anodized aluminum adapter
  - Maintenance-free and low noise
  - Resistance to dirt and dust
  - Operation temperature  $-50^\circ\text{C}/+90^\circ\text{C}$

### 标准规格 Standard specifications



轴 Shaft: h6-h9

产品编码 Part No.	$d_1$ [mm]	公差 Tolerance [mm]	$H \pm 0.01$ [mm]	$H_1$ [mm]	$A$ [mm]	$E_1 \pm 0.15$ [mm]	$E_2 \pm 0.15$ [mm]	$S_1$ [mm]	$A_1$ [mm]	$A_2$ [mm]	$H_2$ [mm]	$H_3$ [mm]	$L$ [mm]
LIN-11BF-12	12	+0.030/+0.088	18	28	43	32	23	M5	20	13	6	11	32
LIN-11BF-16	16	+0.030/+0.088	22	35	53	40	26	M6	26	15	7	11	36
LIN-11BF-20	20	+0.030/+0.091	25	41	60	45	32	M8	32	19	7	12.5	45
LIN-11BF-25	25	+0.030/+0.091	30	50	78	60	40	M10	40	23	9	15	58
LIN-11BF-30	30	+0.040/+0.110	35	59	87	68	45	M10	48	28	10	58	68
LIN-11BF-40	40	+0.040/+0.115	45	76	108	86	58	M12	62	80	20	20	80
LIN-11BF-50	50	+0.050/+0.130	50	89	132	108	50	M16	78	100	24	24	100

产品编码 Part No.	轴径 Shaft [mm]	F max. [N] 最大动载荷 Dynamic Load	F max. [N] 最大静载荷 Static Load	重量 Weight [g]
LIN-11BF-12	12	960	6000	50
LIN-11BF-16	16	1440	7500	80
LIN-11BF-20	20	2250	10800	130
LIN-11BF-25	25	3625	18000	280
LIN-11BF-30	30	5100	24000	430
LIN-11BF-40	40	8000	37500	850
LIN-11BF-50	50	12500	45000	1550