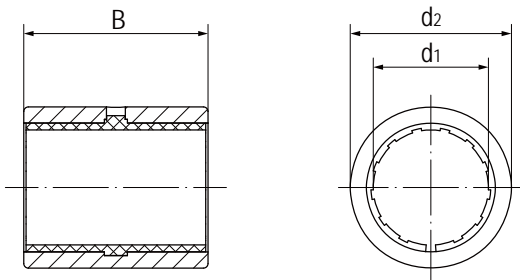


### LIN-12R 短型直线轴承 Linear bearings, closed, short design



- 封闭式短型设计
- 装配LIN-12滑动膜
- 阳极氧化铝合金适配器
- 过盈配合压装
- 免维护、低噪音
- 适用于污垢或灰尘环境
- 使用温度-50℃/+90℃
- Closed and short design
- Assembled LIN-12 liners
- Anodized aluminum adapter
- Assembly by press fitting
- Maintenance-free and low noise
- Resistance to dirt and dust
- Operation temperature -50℃/+90℃

### 标准规格 Standard specifications



产品编码 Part No.:

LIN-12R-10

内径 Inner diameter

封闭式保持器 Closed housing

LIN-12标准滑动膜  
Standard liners LIN-12

座孔 Housing: H7 轴 Shaft: h6-h9

产品编码 Part No.	d <sub>1</sub> [mm]	公差 Tolerance [mm]	d <sub>2</sub> h7 [mm]	B h10 [mm]
LIN-12R-06B	6	+0.020/+0.068	12	22
LIN-12R-08B	8	+0.025/+0.083	15	24
LIN-12R-10	10	+0.030/+0.088	17	26
LIN-12R-12	12	+0.030/+0.088	19	28
LIN-12R-16	16	+0.030/+0.088	24	30
LIN-12R-20	20	+0.030/+0.091	28	30
LIN-12R-25	25	+0.030/+0.091	35	40
LIN-12R-30	30	+0.040/+0.110	40	50
LIN-12R-40	40	+0.040/+0.115	52	60
LIN-12R-50	50	+0.050/+0.130	62	70

产品编码 Part No.	轴径 Shaft [mm]	座孔 Housing [mm] H7	公差 Tolerance [mm]	F max. [N] 最大动载荷 Dynamic Load P=5MPa	F max. [N] 最大静载荷 Static Load P=35MPa	重量 Weight [g]
LIN-12R-06B	6	12	0/+0.018	600	4200	4
LIN-12R-08B	8	15	0/+0.018	650	4550	6
LIN-12R-10	10	17	0/+0.018	650	4550	9
LIN-12R-12	12	19	0/+0.021	840	5880	11
LIN-12R-16	16	24	0/+0.021	1200	8400	17
LIN-12R-20	20	28	0/+0.021	1500	10500	18
LIN-12R-25	25	35	0/+0.025	2500	17500	41
LIN-12R-30	30	40	0/+0.025	3750	26250	56
LIN-12R-40	40	52	0/+0.030	6000	42000	113
LIN-12R-50	50	62	0/+0.030	8750	61250	152