

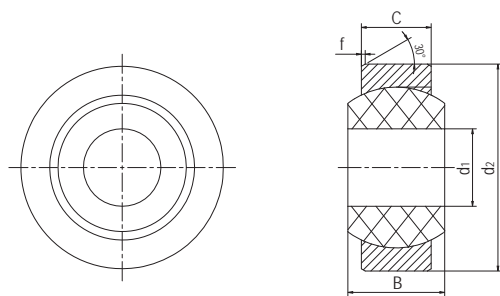
## GLB塑料角支轴承 Plastic spherical bearings



### 产品特性 Product features

- 外壳采用高强度工程塑料M163制成，内部安装BAL标准自润滑球体
  - 免维护、自润滑
  - 自动补偿安装偏差
  - 耐冲击、无噪音
  - 耐灰尘、重量轻
- The housing is made of high strength plastic M163, with standard BAL self-lubricated balls
  - Maintenance free and self-lubricated
  - Self-compensation for the installation deviation
  - Impact resistance and silent operation
  - Dust resistance with light weight

### 标准规格 Standard specifications



产品编码 Part No.:

GLB-04

内径 Inner diameter

产品编码 Part No.	d <sub>1</sub> E10 [mm]	d <sub>2</sub> [mm]	B [mm]	C [mm]	f [mm]	最大调整角度 Max. adjust angle	最大静载荷 [N] Max. static load		重量 Weight [g] Plastic
							径向Radial	轴向Axle	
GLB-04	4	12	5	3	0.3	37°	600	50	0.4
GLB-05	5	14	6	4	0.3	33°	1000	130	0.8
GLB-06	6	14	6	4	0.3	27°	1200	150	0.9
GLB-08	8	16	8	5	0.3	24°	1800	175	1.2
GLB-10	10	19	9	6	0.5	24°	2500	400	1.9
GLB-12	12	22	10	7	0.5	21°	3800	650	2.8
GLB-15	15	26	12	9	0.5	21°	5500	1000	6.9
GLB-16	16	28	13	9.5	0.5	21°	6000	1150	9.0
GLB-20	20	35	16	12	0.8	18°	9000	1400	16.3
GLB-25	25	42	20	16	0.8	16°	14000	2900	29
GLB-30	30	47	22	18	0.8	13°	17000	4000	37.4

\*Al: 铝制外壳根据要求 Aluminum housing upon request